

A photograph of a family walking on a coastal path. A man in a red and white striped shirt points towards the sea. A woman in a colorful floral dress carries a young child. They are walking on a gravel path next to a grassy area. In the background, there is a body of water, a distant shoreline with buildings, and a large tree with green leaves in the foreground. The sky is blue with white clouds.

King Charles III England Coast Path

Jenny Bowen
Delivery Lead – East Sussex
& Kent

KING CHARLES III

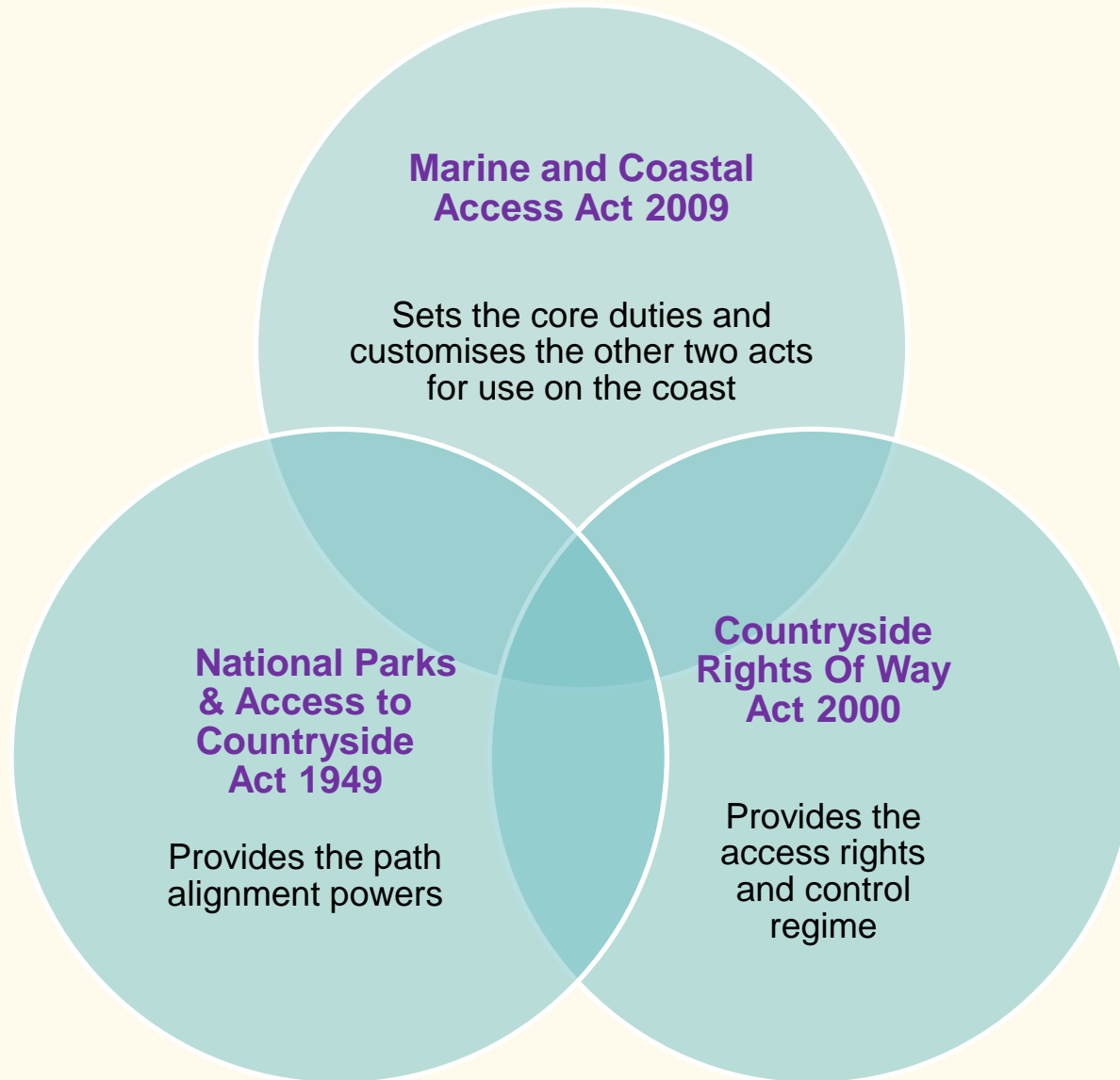
ENGLAND COAST PATH




NATIONAL TRAIL



The legal framework





“One of the most ambitious ways we are opening up the natural world is through the England Coast Path.”

Defra 25yr Environment Plan

‘Levelling Up the United Kingdom’ white paper: ‘the England Coast Path will be fully walkable by the end of this Parliament’.

When completed it will be the longest managed coastal walking route in the world.

The Concept – Improving Coastal Access

To provide

- a continuous route
- a coastal margin
- roll back, to protect against coastal erosion
- the benefits that a quality nation trail can bring

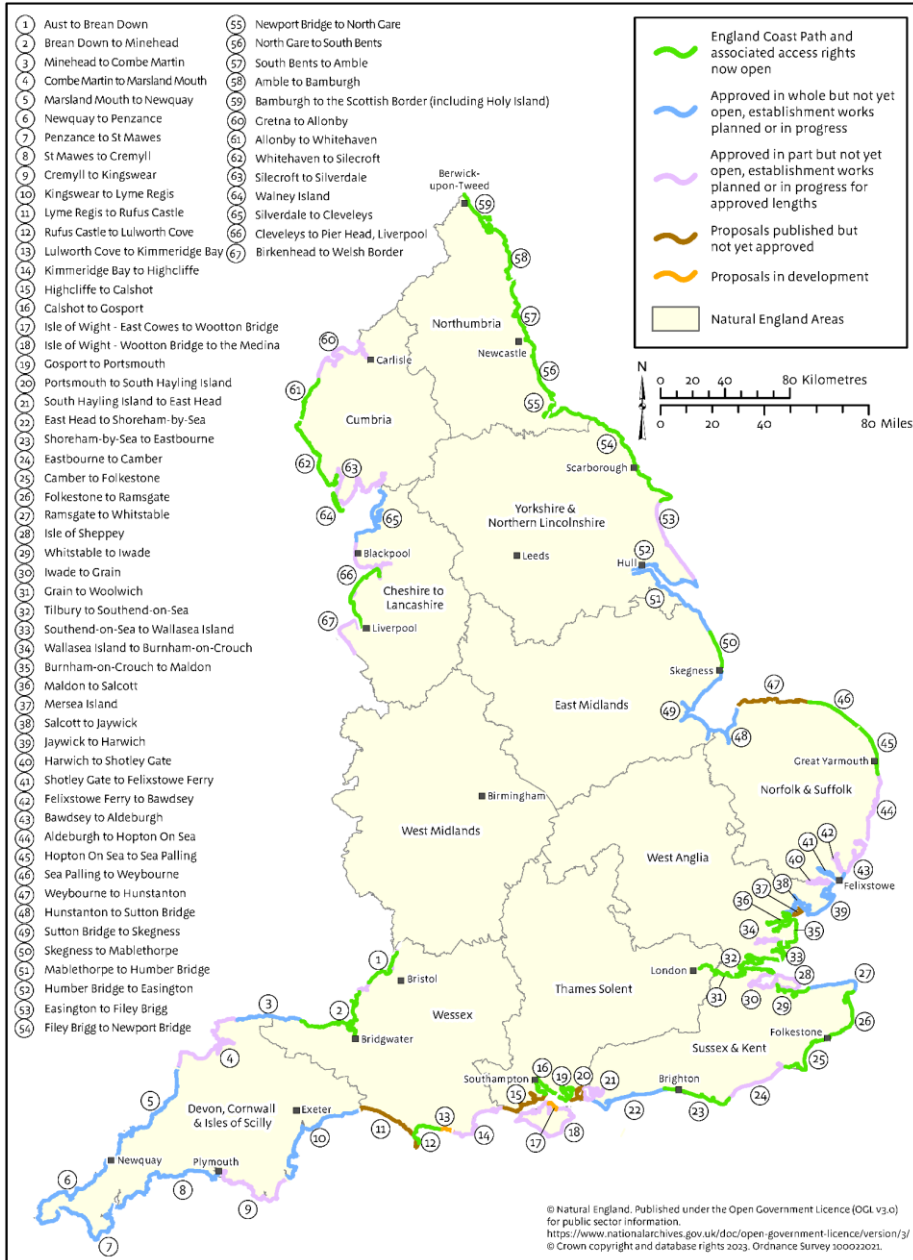
Natural England's role delivering 67 stretches



Balancing public and private interests:

- Landowner engagement– site visits
- Community consultation
- Habitats Regulations Assessment HRA
- Proposals submitted to SoS
- Determination of proposals (SoS)
- Overseeing establishment works (AAs)
- Launch /opening
- Funding and engagement with National Trail partnerships, once open

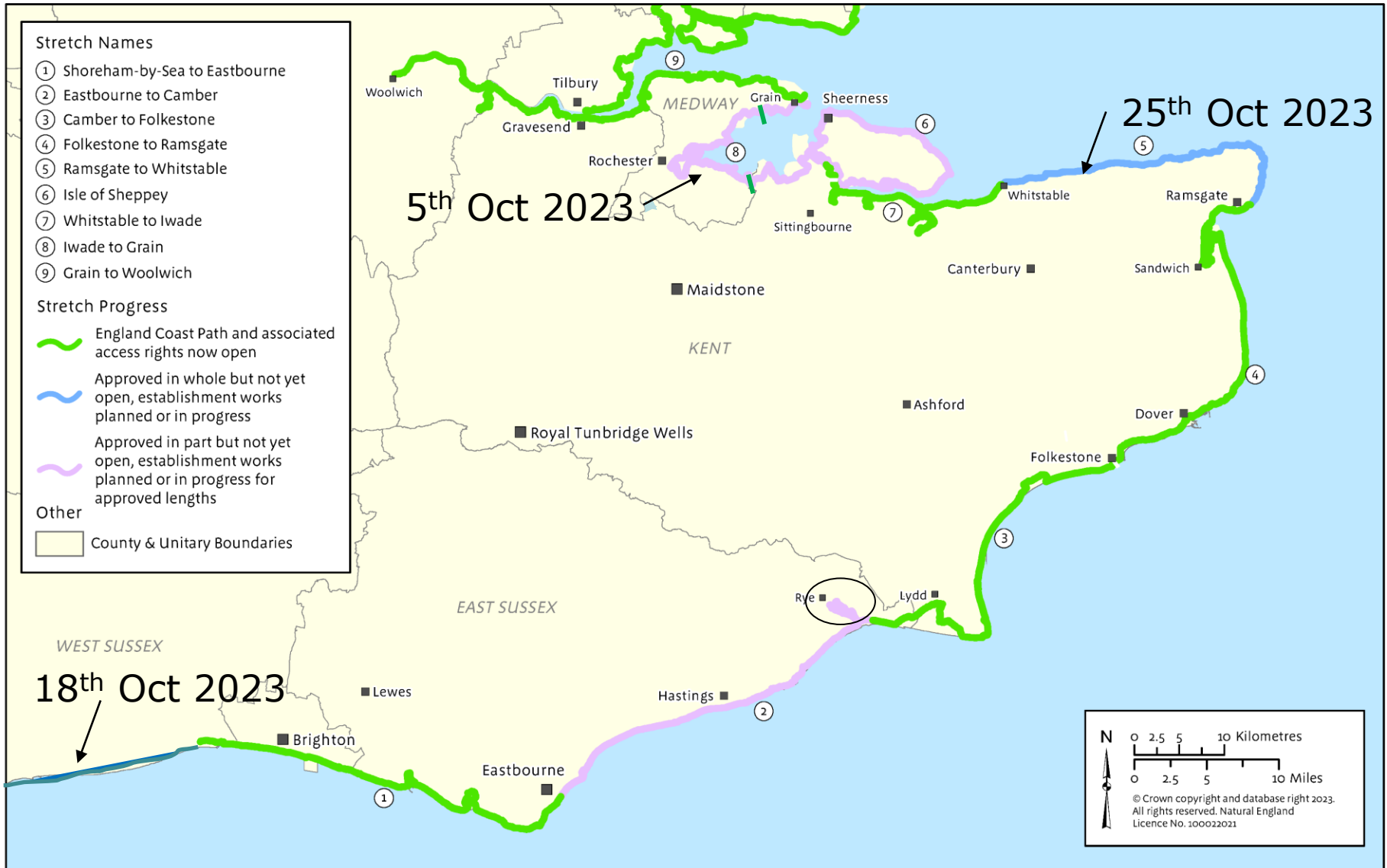




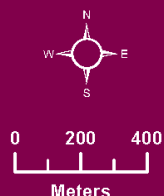
2,692 miles of English coast in total of which proposals for:

99.4% of total length has been submitted to government of which:

- 2,228 miles (83% of total length) have been approved by government, of which:
 - 1,314 miles (49% of total length) have establishment works in hand / pending) while:
 - 914 miles (34% of total length) have been completed and new rights commenced.

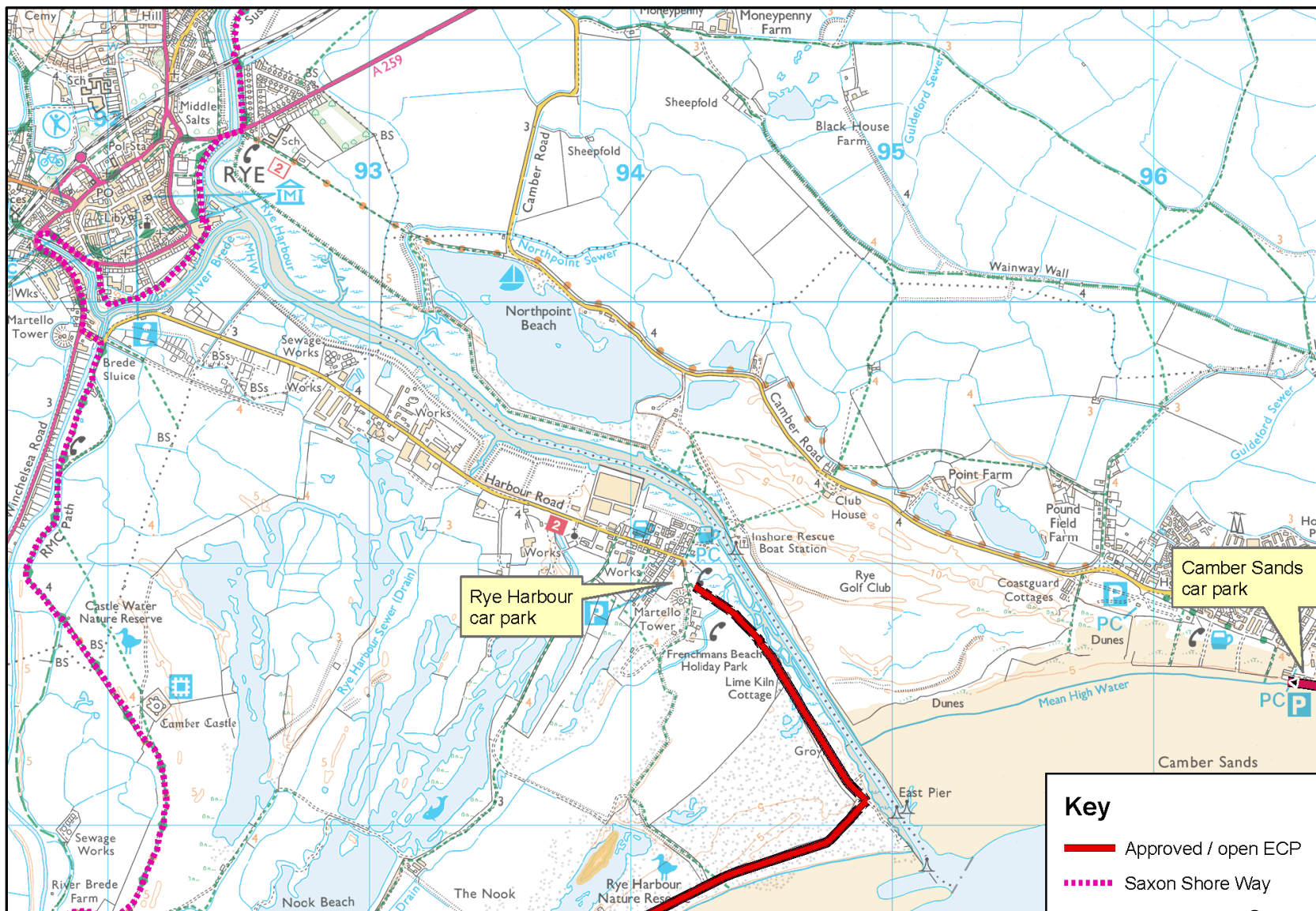


Map 1. King Charles III England Coast Path proposals to be developed between Rye Harbour and Camber Sands



Date:
Aug 2023

Contains, or is derived from information supplied by Ordnance Survey. © Crown copyright and database rights 2016. Ordnance Survey 100022021.



Key

- Approved / open ECP
- ⋯ Saxon Shore Way

Not just a path...



The KCIIECP = National Trail

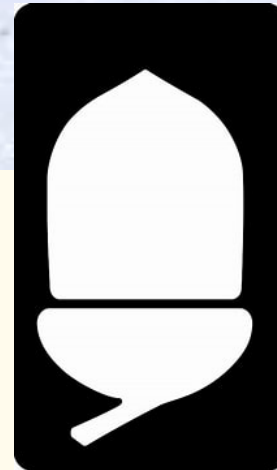
+

The Coastal Margin

Rollback

Component 1 – The KCIIECP Trail

- Proposals - what's there already, improving it, and new access
- Public Right of Way (PROW) - we're not creating new PROW!
- National Trails standards - can be walked without needing a map
- Marked by the National Trails acorn logo – some co-branding with existing trails



Component 2 – The Coastal Margin

- A recognisable **corridor of coastal land** incorporating a walking route and coastal margin to the water's edge
- Clear boundaries to landward and seaward sides
- Existing rights (PROW) and new rights ('**coastal access rights**')
- Purpose – to secure access to **beaches, foreshore and cliffs** on foot



- Includes land that is not accessible: '**excepted land**' and land '**excluded**' by direction
- Seaward by default, landward when fulfilling certain conditions or through dedication

What rights are created?



- **open-air recreation on foot:** walking, picnicking, kite-flying, climbing (but not camping, lighting fires, riding a horse or bike)
- subject to national restrictions (**no horse riding or cycling, fires, camping etc.**) while local restrictions are put in place for wildlife, 'suitability', land management practices (e.g. agriculture) reasons
- Horses and cycles can only be ridden by permission of landowner or via existing legal rights
- **No vehicles** (other than mobility vehicles)



Sensitive habitats and species



Controlling access

For nature conservation / land management..

Least restrictive approach

Mixture of formal and informal measures – for example:

- Signage (eg interpretation)
- Directing people (eg fencing)
- Temporary fencing on beaches
- Dogs on leads
- Salt marsh and mud – (unsuitable for access)



Component 3 – Rollback

- The ability to move the King Charles III England Coast Path from its current location if needed
- For example, coastal erosion, managed retreat
- (Any PROW stays where it is however)



Launches and celebrations



www.gov.uk/natural-england

@naturalengland

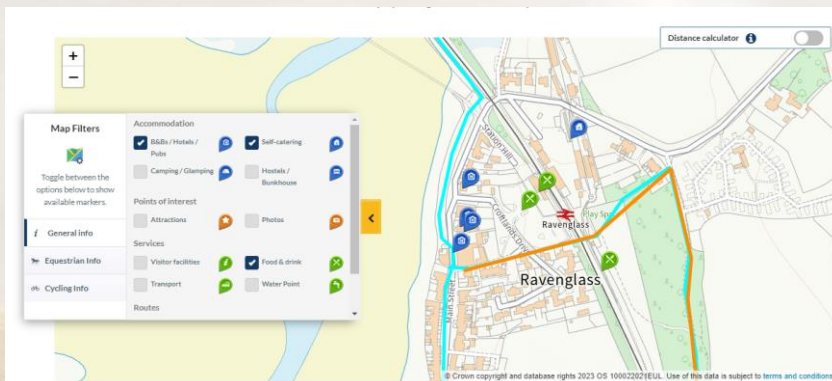
@NationalTrails

#EnglandCoastPath

Where to find information

3. National Trails website – open sections

- to plan walks and report any problems
- look up restrictions
- check for changes to the trail (temporary routes, alternative routes)
- Find places to stay, eat and visit
- <https://www.nationaltrail.co.uk/>



ECP Business Leaflet



National Coastal Tourism
Academy, 2019

- Coastal Tourism in England generated £13.7bn tourism spend,
- 21m overnight domestic visits,
- 169m day visits and supported
- 210,000 tourism related jobs (pre-covid)



Colne Estuary near
Brightlingsea

Promoting your business to England Coast Path users

Natural England is creating a new National Trail around the whole English coast - The England Coast Path

If your business is near the England Coast Path or any National Trail, this is a great opportunity for free and easy promotion. Anyone can add shops cafes pubs restaurants accommodation events attractions dog friendly venues viewpoints other facilities to the map.

- National Trails are long distance footpaths and bridleways in England and Wales for everyone to use.
- Walkers and people who enjoy exploring the coast use the National Trails website to plan their visits. See www.nationaltrail.co.uk
- You can promote your business, service, event or place of interest for free on the National Trails website, inspire people to spend more time in your area and benefit from the economic impact of visitors. See: <https://www.nationaltrail.co.uk/business>

www.nationaltrail.co.uk/england-coast-path



Contacts & information

southeastcoastalaccess@naturalengland.org.uk

<https://www.gov.uk/government/collections/england-coast-path-improving-public-access-to-the-coast>

<https://www.nationaltrail.co.uk/>

Thank you – any questions?

